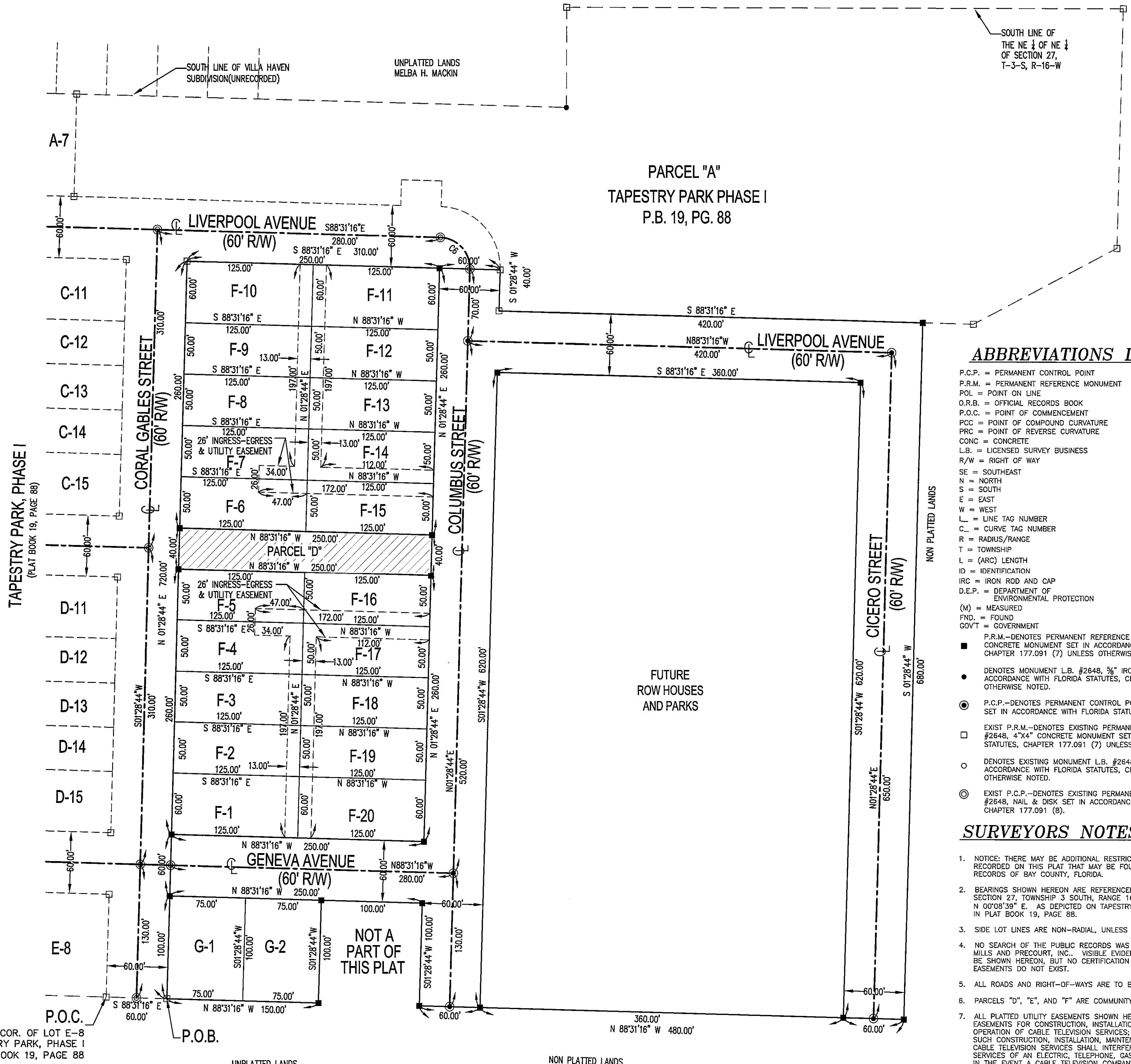


PREPARED BY: DRMP ENGINEERS - SURVEYORS - PLANNERS - SCIENTISTS LAND SURVEYING BUSINESS NO. 2648 100 Beckrich Road, Suite 120 - Panama City Beach, Florida 32407

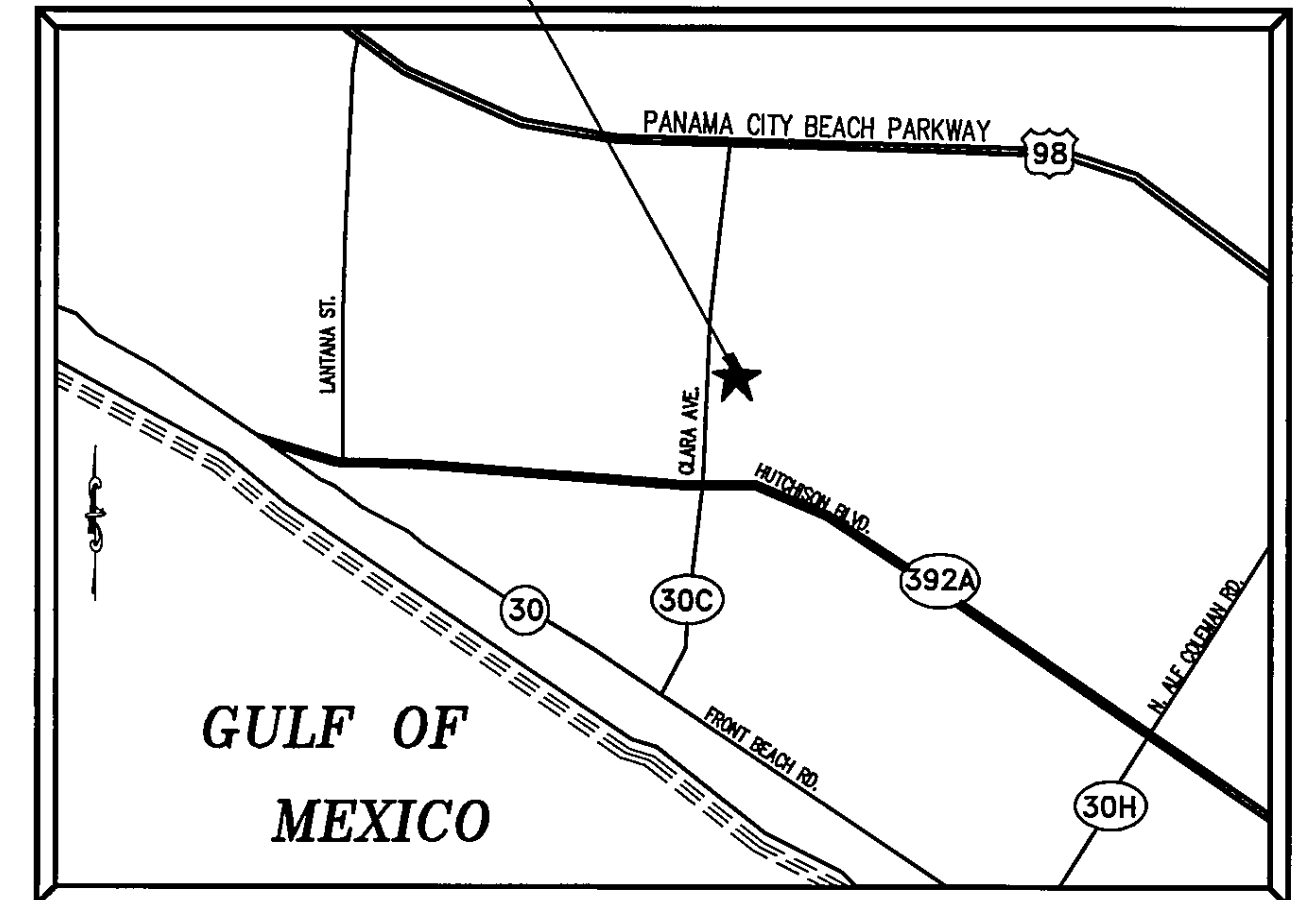
TAPESTRY PARK PHASE II A SUBDIVISION IN SECTION 27, TOWNSHIP 3 SOUTH, RANGE 16 WEST, PANAMA CITY BEACH, BAY COUNTY, FLORIDA

File # 2005051612, Plat BK 21 Page 56, Recorded 06/30/2005 at 03:21 PM, Harold Bazzel, Clerk Bay County, Florida Deputy Clerk GC Trans # 690851

DATE PREPARED: JUNE 2005



PROJECT LOCATION



VICINITY MAP

Table with 6 columns: CURVE #, DELTA ANGLE, RADIUS, ARC LENGTH, CHORD LENGTH, CHORD BEARING. Row 1: C6, Δ=90°00'00", R=30.00', L=47.12', C=42.43', CB=S43°31'61"E

ABBREVIATIONS LEGEND

- P.C.P. = PERMANENT CONTROL POINT
P.R.M. = PERMANENT REFERENCE MONUMENT
POL = POINT ON LINE
O.R.B. = OFFICIAL RECORDS BOOK
P.O.C. = POINT OF COMMENCEMENT
P.C.C. = POINT OF COMPOUND CURVATURE
P.R.C. = POINT OF REVERSE CURVATURE
CONC = CONCRETE
L.B. = LICENSED SURVEY BUSINESS
R/W = RIGHT OF WAY
SE = SOUTHEAST
N = NORTH
S = SOUTH
E = EAST
W = WEST
L = LINE TAG NUMBER
C. = CURVE TAG NUMBER
R = RADIUS/RANGE
T = TOWNSHIP
L = (ARC) LENGTH
ID = IDENTIFICATION
IRC = IRON ROD AND CAP
D.E.P. = DEPARTMENT OF ENVIRONMENTAL PROTECTION
(M) = MEASURED
(FND.) = FOUND
GOVT = GOVERNMENT
PK = PARKER KALON & AND
C = CENTERLINE
PT = POINT OF TANGENCY
PC = POINT OF CURVATURE
PI = POINT OF INTERSECTION
P.O.B. = POINT OF BEGINNING
NO. = NUMBER
LL# = LIMITED
CH = CHAPTER
F.S. = FLORIDA STATUTES
Δ = DELTA
CB = CHORD BEARING
C = CHORD
BK. = BOOK
INC. = INCORPORATED
± = MORE OR LESS
LS = LAND SURVEYOR
POT = POINT ON TANGENT
RP = RADIUS POINT
SUPO = SURVEYOR SUPPLY COMPANY
TYP = TYPICAL
P.B. = PLAT BOOK
PG. = PAGE
I.P. = IRON PIPE

DEDICATION:

TAPESTRY PARK NORTH, LLC, TAPESTRY PARK LAND COMPANY, ITS MEMBER, AND CENTURY DEVELOPMENT GROUP, INC., A FLORIDA LIMITED CORPORATION, AS DEVELOPER OF THE LAND HEREON PLATTED AS "TAPESTRY PARK PHASE II" DOES DECLARE THAT IT IS CAUSED THE SAME TO BE SUBDIVIDED AS SHOWN ON THIS PLAT AND THAT THE ROADS AND EASEMENTS ARE DEDICATED TO THE PUBLIC. TAPESTRY PARK NORTH, LLC, TAPESTRY PARK LAND COMPANY, ITS MEMBER, AND CENTURY DEVELOPMENT GROUP, INC., DOES HEREBY REQUEST THAT SAID PLAT BE RECORDED IN THE PUBLIC RECORDS OF BAY COUNTY, FLORIDA.

TAPESTRY PARK NORTH, LLC, TAPESTRY PARK LAND COMPANY, ITS MEMBER
BY: Mark Tanney, President
Witness: Ben Chan

ACKNOWLEDGMENT: STATE OF FLORIDA, COUNTY OF BAY

BEFORE ME, AN OFFICER DULY AUTHORIZED, PERSONALLY APPEARED MARK TANNEY, AND TIMOTHY HARVEY, TO ME KNOW, AND KNOWN TO ME TO BE THE INDIVIDUAL DESCRIBED IN AND WHO EXECUTED THE FOREGOING DEDICATION AS PRESIDENTS OF THE ABOVE NAMED TAPESTRY PARK NORTH, LLC, TAPESTRY PARK LAND COMPANY, ITS MEMBER, AND CENTURY DEVELOPMENT GROUP, INC., AND ACKNOWLEDGED TO AND BEFORE ME THAT SAID INSTRUMENT IS THE FREE ACT AND DEED OF SAID LIMITED LIABILITY CORPORATION.
WITNESS MY HAND AND OFFICIAL SEAL THIS 28 DAY OF June, 2005.
NOTARY PUBLIC, STATE OF FLORIDA

TITLE OPINION:

IT IS THE OPINION OF THE UNDERSIGNED TITLE COMPANY, LICENSED IN THE STATE OF FLORIDA, THAT THE TITLE TO THE LANDS DESCRIBED HEREON IS IN THE NAMES OF THE DEDICATORS AS SHOWN HEREON AND THERE ARE NO UNSATISFIED MORTGAGES ON SAID LAND OTHER THAN AS INDICATED HEREON. OPINION RENDERED ON THIS 28 DAY OF June, 2005.

COUNTY CLERK'S APPROVAL:

THIS IS TO CERTIFY THAT I, HAROLD BAZZEL, CLERK OF THE CIRCUIT COURT OF BAY COUNTY, FLORIDA, HAVE EXAMINED THIS PLAT FOR "TAPESTRY PARK PHASE II" SUBDIVISION AND FIND THAT IT COMPLIES WITH APPLICABLE REGULATIONS FOR SUBDIVISIONS IN PANAMA CITY BEACH, FLORIDA.
SIGNED ON THIS 28 DAY OF June, 2005.
ALBERT E. SHORTT, P.E.
CITY ENGINEER
FLORIDA REGISTRATION 37781

CITY ENGINEER'S CERTIFICATE:

THIS IS TO CERTIFY THAT I, ALBERT E. SHORTT, CITY ENGINEER FOR PANAMA CITY BEACH, FLORIDA, HAVE EXAMINED THIS PLAT FOR "TAPESTRY PARK PHASE II" SUBDIVISION AND FIND THAT IT COMPLIES WITH APPLICABLE REGULATIONS FOR SUBDIVISIONS IN PANAMA CITY BEACH, FLORIDA.
SIGNED ON THIS 28 DAY OF June, 2005.
ALBERT E. SHORTT, P.E.
CITY ENGINEER
FLORIDA REGISTRATION 37781

SURVEYORS NOTES:

- 1. NOTICE: THERE MAY BE ADDITIONAL RESTRICTIONS THAT ARE NOT RECORDED ON THIS PLAT THAT MAY BE FOUND IN THE PUBLIC RECORDS OF BAY COUNTY, FLORIDA.
2. BEARINGS SHOWN HEREON ARE REFERENCED TO THE EAST LINE OF SECTION 27, TOWNSHIP 3 SOUTH, RANGE 16 WEST, BEING N 00°08'39" E. AS DEPICTED ON TAPESTRY PARK PHASE I, RECORDED IN PLAT BOOK 19, PAGE 88.
3. SIDE LOT LINES ARE NON-RADIAL, UNLESS OTHERWISE NOTED.
4. NO SEARCH OF THE PUBLIC RECORDS WAS DONE BY DYER, RIDDLE, MILLS AND PRECOURT, INC. VISIBLE EVIDENCE OF EASEMENTS WILL BE SHOWN HEREON, BUT NO CERTIFICATION IS GIVEN THAT EASEMENTS DO NOT EXIST.
5. ALL ROADS AND RIGHT-OF-WAYS ARE TO BE DEDICATED TO THE PUBLIC.
6. PARCELS "D", "E", AND "F" ARE COMMUNITY ACCESS.
7. ALL PLATTED UTILITY EASEMENTS SHOWN HEREON SHALL ALSO BE EASEMENTS FOR CONSTRUCTION, INSTALLATION, MAINTENANCE, AND OPERATION OF CABLE TELEVISION SERVICES, PROVIDED, HOWEVER, NO SUCH CONSTRUCTION, INSTALLATION, MAINTENANCE, AND OPERATION OF CABLE TELEVISION SERVICES SHALL INTERFERE WITH THE FACILITIES AND SERVICES OF AN ELECTRIC, TELEPHONE, GAS OR OTHER PUBLIC UTILITY. IN THE EVENT A CABLE TELEVISION COMPANY DAMAGES THE FACILITIES OF A PUBLIC UTILITY, IT SHALL BE SOLELY RESPONSIBLE FOR THE DAMAGES. SUCH CONSTRUCTION, INSTALLATION, MAINTENANCE, AND OPERATION SHALL COMPLY WITH NATIONAL ELECTRICAL SAFETY CODE AS ADOPTED BY THE FLORIDA PUBLIC SERVICE COMMISSION.

CITY SURVEYOR'S CERTIFICATE:

THIS IS TO CERTIFY THAT I, WM. DAVID MCCRARY, JR., SURVEYOR UNDER CONTRACT FOR PANAMA CITY BEACH, FLORIDA, HAVE REVIEWED THIS PLAT "TAPESTRY PARK PHASE II" AND HEREBY CERTIFY THAT IT COMPLIES WITH ALL THE REQUIREMENTS OF CHAPTER 177, PART 1 PLATTING, OF FLORIDA STATUTES.
DATE: June 29, 2005
WM. DAVID MCCRARY, JR.
SURVEYOR UNDER CONTRACT, FLORIDA CERT. #4853

CITY COUNCIL APPROVAL/ PANAMA CITY BEACH, FLORIDA:

THIS IS TO CERTIFY THAT THIS SUBDIVISION PLAT, "TAPESTRY PARK PHASE II", HAS BEEN EXAMINED IN REGULAR SESSION AND THAT IT IS HEREBY APPROVED AND ORDERED FILED FOR PERMANENT RECORD BY A MAJORITY VOTE OF THE CITY COUNCIL OF PANAMA CITY BEACH, FLORIDA AS SIGNED ON THIS 28 DAY OF June, 2005.
LEE SULLIVAN, MAYOR
BILLY MATHEW, CITY COUNCILMAN WARD 1
Dale Johnson, City Councilwoman Ward 2
Debbie Sasser, City Councilwoman Ward 3
Ken Nelson, City Councilman Ward 4

CIRCUIT COURT CLERK'S CERTIFICATE:

I, HAROLD BAZZEL, CLERK OF THE CIRCUIT COURT OF BAY COUNTY, FLORIDA, HEREBY CERTIFY THAT THIS PLAT WAS FILED FOR RECORD ON 30th DAY OF June, 2005, IN PLAT BOOK 21, PAGE 56.

CITY MANAGER'S CERTIFICATE:

THIS IS TO CERTIFY THAT I, RICHARD E. JACKSON, CITY MANAGER FOR THE CITY OF PANAMA CITY BEACH, HAVE EXAMINED THIS PLAT "TAPESTRY PARK PHASE II", AND FIND THAT IT COMPLIES WITH THE CITY CHARTER IN SUCH CASES.
SIGNED ON THIS THE 23rd DAY OF June, 2005.
BY: Richard E. Jackson
RICHARD E. JACKSON
CITY MANAGER, CITY OF PANAMA CITY BEACH

NOTICE: This plat, as recorded in its graphic form, is the official depiction of the subdivided lands described herein and will in no circumstances be superseded in authority by any other graphic or digital form of the plat. There may be additional restrictions that are not recorded on this plat that may be found in the Public Records of Bay County.

Harold Bazzel, Clerk of the Circuit Court of Bay County, Florida
Deputy Clerk

TAPESTRY PARK PHASE II PLAT BOOK 21, PAGE 56